



...your journey to success starts here.

**We are kind | We are a team | We try our best  
...and we keep on trying!**

**Kindness | Teamwork | Resilience**

Next Steps Networking: 22.1.2026



## Welcome from the Principal...

A huge thank you to all of our parents/carers, pupils and visitors for supporting our 'Next Steps Networking' transition event today. This is an exciting opportunity to support your child in considering future transition opportunities and the range of possibilities available to your child once they leave Compass.

A special thank you to Miss Jackson, the Academy's Personal Development Lead in coordinating this event; it is hoped that this becomes an annual event in supporting future options for all of our Year 9 pupils, today and in the future!

Furthermore, thank you to our 'Next Step Providers' and wider agencies in attending the event today and for their continued support in promoting partnership working.

On behalf of all of our 'partners', we sincerely hope that today's event is both a useful and enjoyable experience in marking the first stage in your child's 'next steps'!

During the course of the event today, representatives from a range of different providers will be on hand to discuss different options available to your child, to help inform where your child would like to move onto from Compass.

Please be aware that although this event has been coordinated for you to gather further information about the different providers, requests regarding future placements will ultimately be confirmed by Local Authority representatives.

If you require any support or advice regarding your child's transition, please do not hesitate in speaking to a member of the staff team during the course of the event today.

Best wishes,

*Mrs Claire Horne*

(Principal)

## Moving on and Moving Up!



Transitions are an important part of school life, be it moving from primary to secondary school, Compass to your KS4 provider and then onto further or higher education...the possibilities are endless!

We know that moving schools can be a daunting milestone that marks a significant progression in your child's development.

It is normal to find this period of time unsettling, not only for young people but for parents/carers too. Although unsettling, moving up from Year 9 can also be a great time for change!

From Compass, your child will move on to a more adult learning environment and begin the journey towards achieving formal qualifications which will aid your child in later life. Likewise, for many of our pupils, starting a new school can be an exciting time to form new friendships, explore new talents/interests and start a new journey in their education.

# Uncertainty is normal!



For some pupils, the uncertainty about starting a new school can be difficult, it can be easy to think about the worst things that might happen, this can leave us feeling frightened and a little bit worried.

Starting a new school/educational setting can be scary to think about, try not to worry about what might happen and focus on the things that you can do, to help relieve some of your anxieties and worries.

As you grow through life, you will learn that there are so many things in life that we cannot control, this can be tough to accept. Try to see starting a new school as an opportunity and a fresh start-leading to new adventures and exciting new beginnings!

## SEND Support

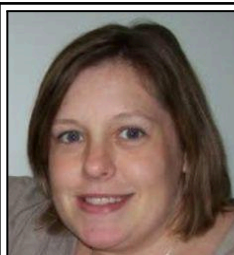


If your child is in receipt of an EHCP (Education Health Care Plan) your child's transition arrangements will be coordinated as part of the Annual Review/consultation process, including your parent/carer views, your child's views, recommendations from the school/Local Authority and relevant settings who are able to meet your child's needs.

If you are worried or concerned about your child's rate of progress in school or feel that your child would benefit from additional support in their transition, please do not hesitate in contacting a member of the Compass Academy SEND team.



Miss Holly Lockyer  
**Vice Principal/ SENCo**  
Email: [h.lockyer@com.hlt.academy](mailto:h.lockyer@com.hlt.academy)



Mrs Munro  
**Reading Lead/Deputy SENCo**  
Email: [c.munro@com.hlt.academy](mailto:c.munro@com.hlt.academy)

Alternatively, for further advice, please visit the Hull SEND Local Offer: <https://hullsendlocaloffer.org.uk/>

## Parents/Carers: How can you help?



Moving schools can be a stressful time, don't be surprised if your child becomes frustrated or overwhelmed. Remember to keep your mind on the bigger picture and continue to support your child through these big changes.

Talking through issues and concerns with your child can help to build their confidence and gives your child support in coping with the practical and emotional worries that they may be experiencing.

**Try asking your child these questions to get the conversation going:**

- ☐ Do you have any ideas about future career options?
- ☐ What would be your first choice school/college for next year? Ask your child to explain why.
- ☐ What do you think will be the best thing about your new school/college?
- ☐ What will you miss most about being at Compass?
- ☐ What is the scariest thing about starting a new school/college?

## Parents/Carers: What can you do?

Many schools and educational settings have their own websites which can offer answers to a lot of your child's questions.

**You can find out about:**

- ☐ What different subjects that they have to offer
- ☐ Travel arrangements
- ☐ Hours of the school day
- ☐ Uniform expectations
- ☐ Out of school clubs/enrichment opportunities
- ☐ Lunch/break time arrangements.

Receiving the answers to these questions can help to alleviate some of the uncertainty that you may have around starting a new school but may also help you in thinking about future transition options.

# What might I need to know?

How will I get to my new school?

What do I have to wear (uniform)?

Are any of my friends going?

What subjects do you teach?

What exam options are available to me?

How long do I get for lunch/break?






What time does school start/finish?

Do they have any sports/after school clubs?

What is your reward system?

# Gaining further Information:

As part of the event today, you will have access to information about a range of different Key Stage 4 providers. Please encourage your child to gain further information about the different settings to inform their future transition options.

|   |  |
|---|--|
|    | <p><b>Aspire Academy</b><br/>351 Annandale Rd,<br/>HULL,<br/>HU9 5DE<br/>Tel: 01482 318789</p>         |
|    | <p><b>Hull College (14-16)</b><br/>Wilberforce Drive,<br/>HULL,<br/>HU1 3 DG<br/>Tel: 01482 598892</p> |
|   | <p><b>Rise Academy</b><br/>Fountain Rd,<br/>HULL,<br/>HU2 0LH<br/>Tel: 01482 226166</p>                |
|  | <p><b>Oakfield Special School</b><br/>Hopewell Rd<br/>HULL,<br/>HU9 4HD<br/>Tel: 01482 854588</p>      |
|  | <p><b>Venn Boulevard Centre</b><br/>172 Boulevard,<br/>Hull,<br/>HU3 3EL<br/>Tel: 01482 585203</p>     |

Please note that Academy representatives also have established relationships with a range of mainstream providers, if you would like to discuss a return to a mainstream provider for your child, please discuss this request with **Mrs Horne, Principal (Compass Academy)**.

# Working with Specialist Services

As part of our targeted support, here at Compass, we work alongside a range of specialist agencies to promote your children's mental health and overall wellbeing.

If required, your child may benefit from support from one of the following services:

- Educational Psychology Services
- CAMHS (Child and Adolescent Mental Health Service)
- Counselling Services
- School Nursing Team
- Mental Health in School support Team (MHST)

|   |  |
|---|--|
|    | <p>CAMHS are a team of experienced clinical professionals in mental health and learning disability who provide a single point of access for emotional and mental health referrals.</p> <p><b>Available Monday to Friday: 9am – 5pm (excluding bank holidays)</b></p> <p><b>Tel: 01482 303688</b><br/> <a href="http://camhs.humber.nhs.uk/">http://camhs.humber.nhs.uk/</a></p>  |
|   | <p>Mind provides support, guidance, and hope to individuals and families experiencing poor mental health.</p> <p>The services are designed to be inclusive, non-judgmental, and confidential, ensuring that people feel safe and supported throughout their mental health journey. If you feel you need advice or support please contact them.</p> <p><b>Available Monday - Friday 9pm-5pm</b></p> <p><b>Tel: 01482 240200      Text: 07520 633447      <a href="mailto:info@heywind.org.uk">info@heywind.org.uk</a></b></p> |
|  | <p>There may be times when you and your family need additional support. Here in Hull, there is a group of services, collectively known as Early Help.</p> <p>Early Help can offer support to help make problems easier to understand and quicker to solve.</p> <ul style="list-style-type: none"> <li>• <b>North Locality Hub – 01482 828 901</b></li> <li>• <b>East Locality Hub – 01482 708 953</b></li> <li>• <b>West Locality Hub – 01482 305 770</b></li> </ul>   |